

BRADWELL B PROJECT

# Statement of Community Consultation (SoCC)

March 2020



# Statement of Community Consultation

Prepared pursuant to section 47(1) of the Planning Act 2008 and regulation 12 of the Infrastructure Planning (Environmental Impact Assessment) Regulations 2017

## 1. Overview

### About this Statement of Community Consultation

- 1.1. This Statement of Community Consultation (SoCC) sets out how the Bradwell Power Generation Company Limited (hereafter referred to as Bradwell B) will consult the local communities on its proposals for a new nuclear power station at Bradwell in the district of Maldon, Essex (hereafter referred to as the Bradwell B Project).
- 1.2. This version of the SoCC has been prepared in advance of the first round of consultation (Stage One) which is non-statutory. The SoCC will be revised and published again prior to the statutory consultation stage.
- 1.3. Whilst Stage One is non-statutory, this SoCC has been prepared pursuant to section 47(1) of the Planning Act 2008 (Ref. 1) and regulation 12 of the Infrastructure Planning (Environmental Impact Assessment) Regulations 2017 (Ref. 2). Bradwell B has taken into account the views of Maldon District Council (MDC), Essex County Council (ECC) and Chelmsford City Council (CCC) in drafting this SoCC and making it available for inspection.

### What is the Bradwell B Project?

- 1.4. The Government identifies that new nuclear power stations should play a significant role in the future generation of electricity for the United Kingdom (UK). The site (which neighbours the decommissioned Bradwell A nuclear power station) was designated by the Government in 2011 as being potentially suitable for a new nuclear power station in the National Policy Statement (NPS) EN-6 (Ref. 3). Since then the Government has continued to confirm support for the sites listed in EN-6.
- 1.5. The development on the main development site, adjacent to Bradwell A, would include plant and ancillary structures and features that

make up the operational Bradwell B power station, together with associated development to support its construction and operation. The Bradwell B power station would generate approximately 2.2GW of electricity, providing power for around 4 million homes per annum. In addition, the Bradwell B Project would include off-site associated development. This would include, but not be limited to, sites from which freight and construction workers would be transported to the main development site, as well as highway improvements and other infrastructure. Some of this associated development may fall outside of the district of Maldon, within the boundary of Chelmsford City Council (CCC).

### What companies are promoting the Bradwell B Project?

- 1.6. CGN (through its wholly owned subsidiary General Nuclear International Limited) and EDF are partnering to develop the Bradwell B Project through the joint venture company Bradwell B. CGN and EDF have a long-standing partnership spanning 30 years. Together, in the UK, they are developing plans for a nuclear power station in Suffolk (Sizewell C) and are currently building a nuclear power station in Somerset (Hinkley Point C).
- 1.7. CGN is a major generator of low carbon energy in China and around the world and is the biggest builder of new nuclear power stations globally. CGN has more than 30 years' experience of safely delivering nuclear power projects. EDF Energy, EDF's UK subsidiary, is the UK's largest producer of low-carbon electricity, providing around one-fifth of the country's demand. It currently operates the UK civil nuclear fleet consisting of eight power stations.

## 2. Context

### UK government policy

- 2.1. The Bradwell B Project is defined as a Nationally Significant Infrastructure Project (NSIP) under the Planning Act 2008. The Secretary of State has adopted policies in relation to NSIPs in a series of National Policy Statements (NPS), the following of which are applicable to the Bradwell B Project:
  - Overarching National Policy Statement for Energy (NPS EN-1) (Ref. 4);
  - National Policy Statement for Nuclear Energy Generation (NPS EN-6).
- 2.2. Collectively, these NPSs establish that there is an urgent need for new electricity generating capacity, including nuclear. NPS EN-6 makes clear that an application for development consent for a new nuclear power station should be assessed on the basis that 'the need for such infrastructure has been demonstrated' and goes on to identify the Bradwell B site as one of six sites potentially suitable for deployment for a new nuclear power station before the end of 2025.
- 2.3. A subsequent Written Ministerial Statement (7 December 2017) makes clear that the Government continues to give strong in-principle support to project proposals at those sites listed in NPS EN-6 yet to apply for development consent and due for deployment beyond 2025, including the Bradwell B site. Such sites should be considered under section 105(2) of the Planning Act 2008, together with policies provided by NPSs EN-1 and EN-6 as important and relevant matters.
- 2.4. Given the Government's support, the principle of nuclear power and the suitability of the Bradwell B site for a new nuclear power station will not be consulted on. Instead, the consultation will focus on seeking views on the Bradwell B Project proposals, which in some instances may include options for the location or design of different elements of the project.

### The planning process for new nuclear power stations

- 2.5. The proposed development will be subject to an application for a Development Consent Order (DCO). The Planning Inspectorate, acting as the examining authority on behalf of the Secretary of State for Business, Energy and Industrial Strategy (BEIS), will examine the application and make a recommendation to the Secretary of State who will make the final decision. Useful guidance on the DCO process is provided on the Planning Inspectorate website <https://infrastructure.planninginspectorate.gov.uk/application-process/the-process/>

### The consultation process

- 2.6. The Planning Act 2008 requires developers to: (i) consult with the local community, local authorities, statutory bodies and persons with an interest in land affected by the proposals; and (ii) publicise the proposals more widely. This process is referred to as 'pre-application consultation' and must be carried out before the application for development consent can be accepted by the Planning Inspectorate for examination.
- 2.7. Pre-application consultation with local people, businesses and stakeholders is an extremely important stage in the development consent process. It allows developers to share information about the proposed NSIP, to understand consultees' concerns and to amend the proposals and seek to identify ways of mitigating the potential impacts of the development, and maximise the benefits, before the application is submitted. It also leads to applications that are better understood and the important issues identified prior to submission – which leads to the more efficient examination of the application.
- 2.8. Section 47 of the Planning Act 2008 requires developers to prepare and publish a SoCC explaining how they will consult people living in the vicinity of the proposed development. The consultation must then be undertaken in accordance with the published SoCC.

## Statement of Community Consultation

- 2.9. This SoCC is designed to inform the community on how the consultation for the Bradwell B Project will be managed, explaining:
- Briefly the Project, the approach to sharing environmental information;
  - The development consenting process;
  - When consultation will be undertaken;
  - With whom and where the consultation will be undertaken;
  - How people, groups and communities will be consulted; and
  - How consultees can respond to the consultation and find out how feedback has been taken into account.
- 2.10. The Bradwell B Project team will ensure that consultation is meaningful, open and honest, inclusive and easily understood to enable constructive and informed feedback. The consultation material will describe the Bradwell Project as a whole and explain those elements of the Bradwell Project which are not likely to be influenced by consultation (because they are matters of Government policy or driven by factors of safety for example) and on which elements views are actively sought.
- 2.11. As required by the Planning Act 2008, a draft version of the SoCC was provided to MDC, ECC and CCC, as the relevant local authorities for review and comment. This final Stage One SoCC has been prepared having regard to the local authorities' responses. The SoCC is available on the Bradwell B website ([www.bradwellb.co.uk](http://www.bradwellb.co.uk)) and has been advertised in newspapers in circulation in the vicinity of the land required for the development of the Bradwell B Project. The SoCC will be revised and published again prior to the statutory consultation stage.

- 2.12. Consultation and the ability for the community and stakeholders to be involved in the DCO process will continue following submission of the application. Once accepted by the Planning Inspectorate, Bradwell B are required to publicise the application and anyone with an interest in the project can register to become an 'interested party'. Interested parties are then able to participate in the examination of the application.

## 3. What are we proposing

### The Bradwell B Project

- 3.1. Bradwell B plans to build a new nuclear power station on land to the south and east of the existing Bradwell A power station.
- 3.2. The main permanent development will be the power station, which is likely to include: two UK HPR1000 units (a type of pressurised water reactor) and associated buildings; turbine halls and electrical buildings; cooling infrastructure and associated structures; an operational service centre; fuel and waste storage facilities; a National Grid 400kV substation; associated works including a simulator/training centre building; flood defence and coastal protection measures; highways works including a new access road; car parking; and landscaping. The location of the main development site is shown at Figure 1.
- 3.3. Building a new power station at Bradwell would potentially affect those living in communities close to the main development site and off-site associated development sites through, for example: increased traffic; visual impact; loss of public access to parts of the site(s); and other potential environmental impacts.

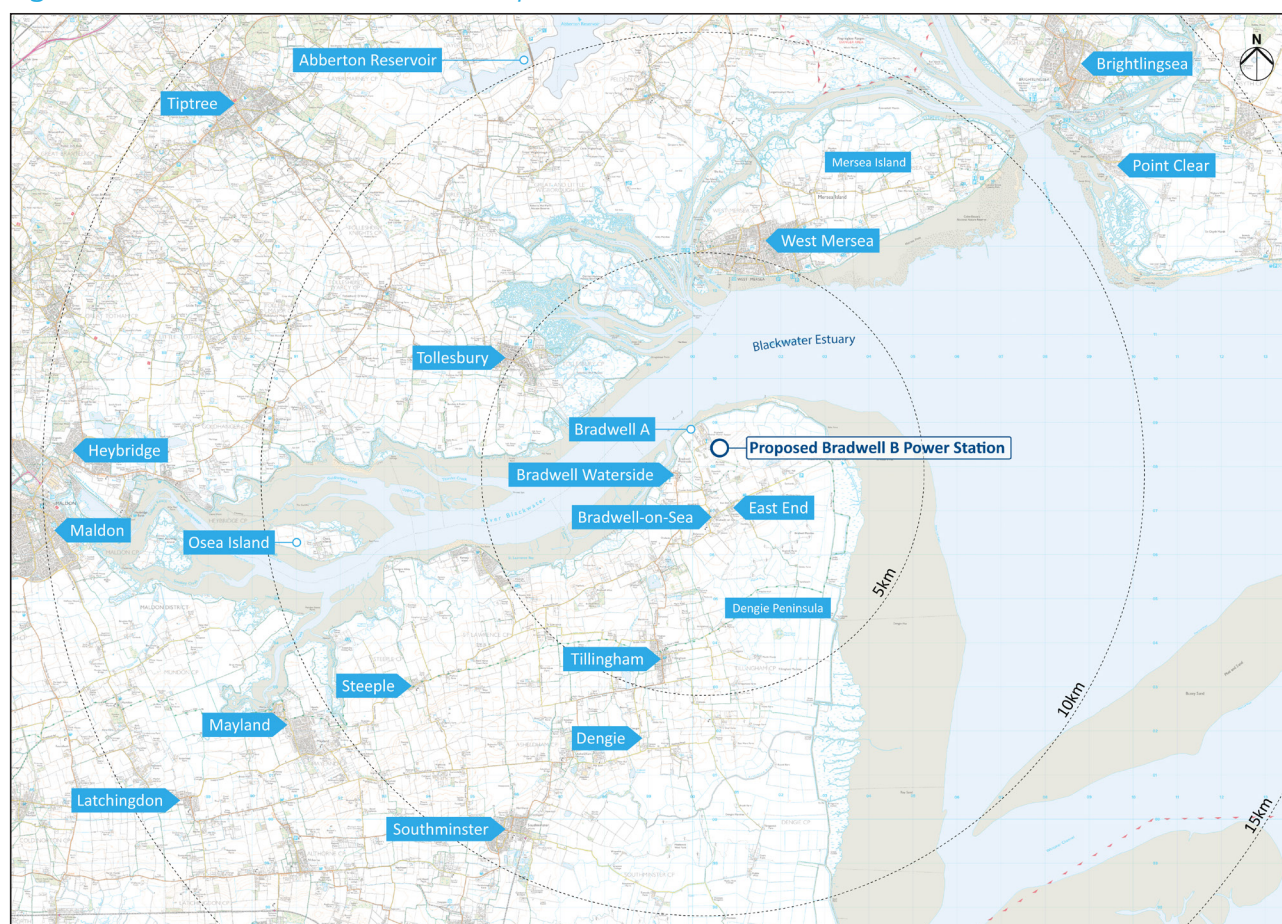
3.4. Other temporary development is also likely to be needed to support the construction of the power station, including:

- Construction areas including contractors' laydown, fabrication and storage facilities;
- Earthwork management areas;
- Temporary buildings and structures, including offices, plant, construction roads and parking areas;
- Marine transport works;
- An accommodation campus and an area(s) for caravans;
- Park and ride facilities and a logistics centre; and
- Other road and rail works necessary to ensure appropriate access, whilst minimising impact on the local highway network.

3.5. Permanent development off-site could include highway improvements along the B1021 and other local roads to the east of the A12, as well as facilities to serve the operational power station, including a mobile emergency equipment garage and alternative emergency control centre.

3.6. Building Bradwell B would create tens of thousands of jobs and deliver millions of pounds of investment in the local and regional economies. The consultation material will provide details in relation to the required workforce during construction and operation of the power station and the approach to building long term sustainable skills for individuals and businesses.

Figure 1: Location of the main development site



## EIA development

- 3.7. The development of a new nuclear power station is classified under Schedule 1 to the Infrastructure Planning (Environmental Impact Assessment) Regulations 2017 (the 2017 Regulations) as 'EIA Development'. Bradwell B will carry out an EIA (Environment Impact Assessment) of the Bradwell B Project proposals, with the findings detailed in the Environmental Statement, summarised in a Non-Technical Statement that will be submitted in support of the application for development consent. The Environmental Statement will be informed by consultation and engagement.

## Preliminary environmental information

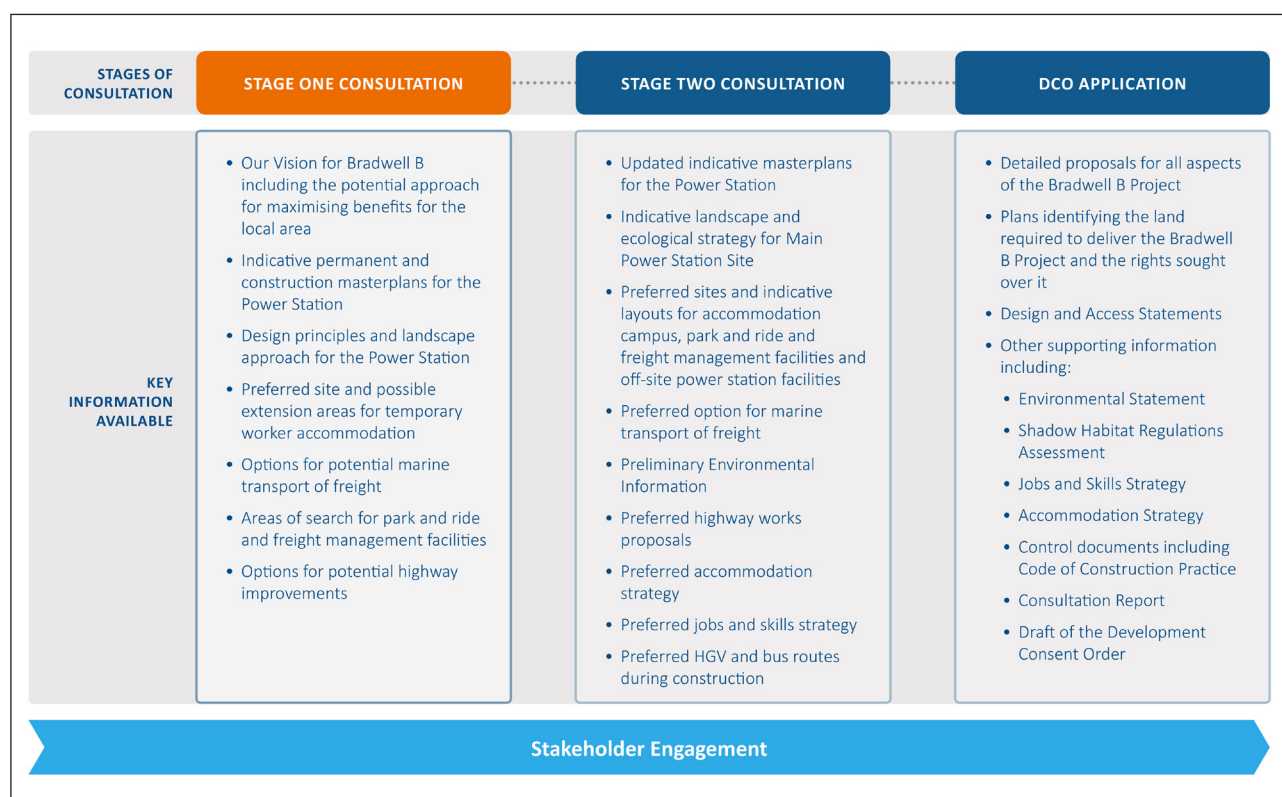
- 3.8. The 2017 Regulations also require an applicant for EIA development to consult on preliminary environmental information. This is the environmental information that is available on the project at the time of pre-application consultation. The Stage One consultation will present the vision and early emerging proposals to help us shape our preferred approach. This will include an outline of the key effects that the Bradwell B Project is likely to have on the local area including a description of the existing baseline environmental conditions of the main development site and potential search areas for associated development.
- 3.9. The statutory Stage Two consultation (and any additional stages of consultation) will include our preliminary environmental information including an indication of likely impacts that could arise from our preferred proposals and our proposed mitigation. The information provided will include, but not be limited to, information on the main environmental issues such as: socio-economics, noise, traffic and transport, recreation, air quality, soils, hydrology, ecology, the marine environment and landscape and visual considerations. Information

will be included on ways to reduce any potentially significant negative impacts through mitigation, including landscaping. The preliminary environmental information will enable consultation bodies to develop an informed view of the likely significant environmental effects of the development (and of any associated development). We will provide further detail in the next iteration of the SoCC following Stage One consultation.

## 4. When we will be consulting Stages of consultation

- 4.1. Two main stages of pre-application consultation are currently envisaged ahead of submission of the application for development consent. This may be supplemented by additional stages of limited, focused consultation, if considered necessary (for example if new information emerges, our proposals change or we would like to seek views on other options before presenting our preferred approach). Figure 2 provides our current view on what type of information is likely to be available and when.
- 4.2. The Stage One consultation will consider the initial proposals and options for the Bradwell B Project. Where appropriate, it will set out options for different components of development, areas of search for associated development (such as park and rides and freight management facilities) together with our initial views on the strategies that may be required to address effects and enhance benefits, so that the views of stakeholders can be taken into account and inform more detailed work.

Figure 2: Route map to DCO application

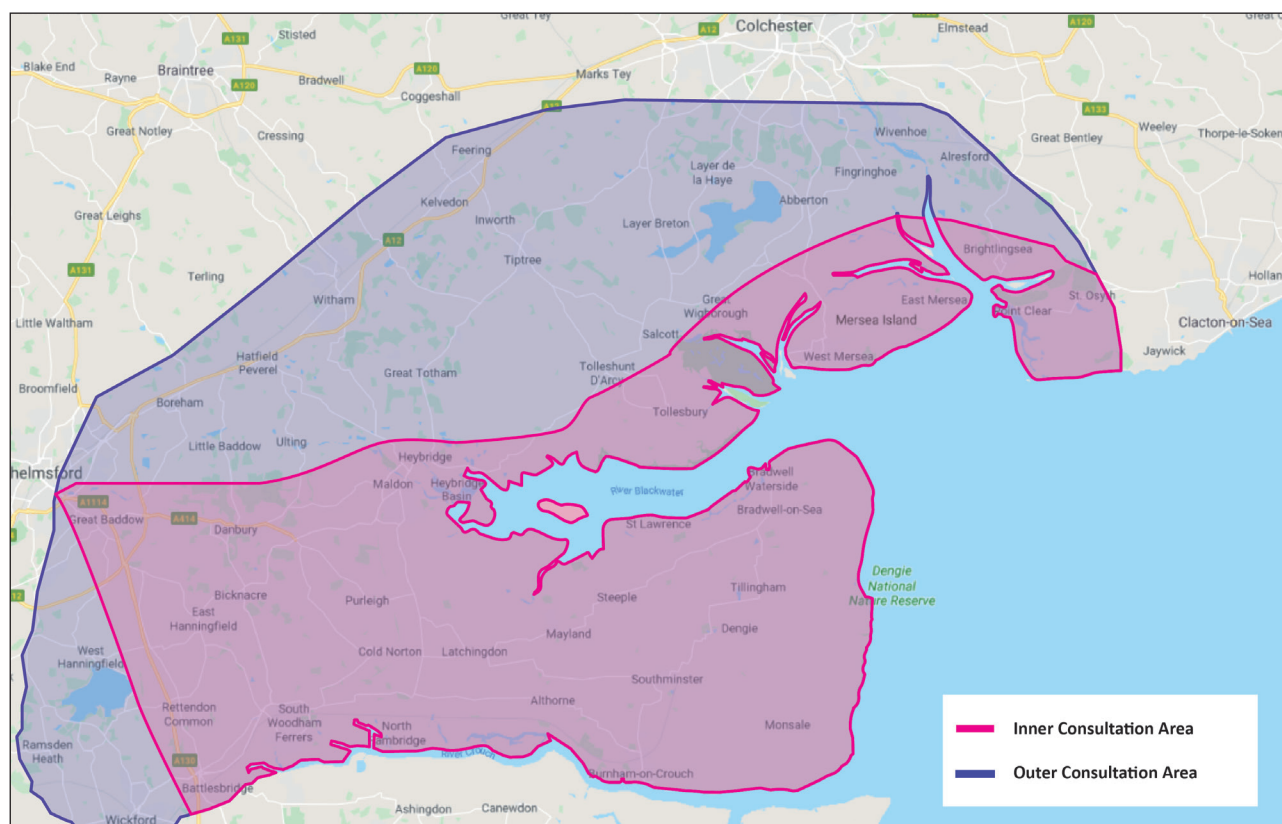


- 4.3. Following the Stage One consultation, the responses and feedback received will inform the development of the proposals ahead of Stage Two consultation, which will include preferred proposals and will include consultation with affected landowners and those with an interest in the land. Again, feedback from the second stage and any supplementary stages of consultation will be fully considered prior to submitting the application for development consent.
- 4.4. The launch dates for each stage of consultation will be announced and published at least 10 days before the start of that consultation stage. This will be done this in a number of ways, which will include: publicising the consultation in local media and local newspapers; writing to the county, district and parish councils and other key stakeholders; and circulating a newsletter to all homes and businesses within the inner and outer consultation areas (refer to Figure 3). Details of the consultation activities will be included in this publicity, including dates and venues of public exhibitions. Related Consultations.
- 4.5. Bradwell B recognise that there are a number of current and potential NSIP projects in Essex and neighbouring counties, including the Lower Thames Crossing (LTC), M25 Junction 28 and the expected A12 re-alignment. The necessary connection from the Bradwell B power station to the National Grid would also be subject to a separate NSIP likely to be promoted by National Grid Electricity Transmission. During the pre-application process all other major consultation exercises being undertaken in the local area will be monitored. Efforts will be made to co-ordinate the pre-application consultation stages with other major projects, where possible, to avoid confusion and/or consultation fatigue.

## 5. Who and where we will be consulting

- 5.1. Those living, working or otherwise using the local areas in the vicinity of the Bradwell B site and any off-site associated development sites are the focus of the consultation exercise, along with the statutory consultees.
- 5.2. The communities identified in the areas shown in Figure 3 will be consulted. However, anyone can provide feedback on the proposals for the Bradwell B Project and written information will be made widely available, to ensure consultation is effective and accessible.
- 5.3. The community consultation process will take place across two geographical areas – an Inner Consultation Area and Outer Consultation Area.
- 5.4. The Inner Consultation Area has been identified as those communities who are most likely to experience direct effects from either the main development site or associated development. Due to the proximity of those living, working or otherwise using the local areas closest to the main development site, consultation will be most intensive within the Inner Consultation Area, with public events near locations where development is proposed. The Outer Consultation Area covers a wider area and also includes those communities that may experience more indirect effects of the Project, for example as a result of traffic or economic impacts.

Figure 3: Inner and Outer Consultation Areas



- 5.5. It is recognised that residents, communities, groups and their stakeholders will have different requirements for information and the process of consultation will reflect this. For example, in the Inner Consultation Area discussions are expected to particularly focus on the direct impacts arising from the construction and operation of the main development site, whereas the Outer Consultation Area may have focus on broader economic and social matters and off-site associated developments, where appropriate. Whilst the consultation activity will largely be based on these defined geographical areas Bradwell B would welcome views from anyone with an interest in the proposals, including anyone from outside these areas (and consultation events may be held outside these areas as appropriate).



- 5.6. Engagement events (which could include exhibitions, presentations, drop in sessions, a consultation bus and other outreach activities) will be appropriately targeted within the Inner Consultation Area, recognising that these communities would potentially be the most affected by the Bradwell B Project. Public and other stakeholder engagement will also be undertaken in the Outer Consultation Area to help facilitate feedback from the wider public.
- 5.7. As well as consultation with the wider public and their representatives, we will also be working with specific groups, local businesses, community groups and other organisations to increase awareness of the Project. We will work with MDC and ECC to identify specific ways to target hard to reach groups (such as those with limited ability to access our proposals and / or events, and those less likely to be aware of the project and consultation), which could include promotion of the consultation in a variety of formats and using different channels, and provision of alternative ways to access the proposals.

## 6. How we will consult

### Consultation material

- 6.1. Each stage of consultation will comprise: a Consultation Document that will include information about the proposal and any assessments undertaken; a Summary Consultation Document; and a questionnaire to assist the community in completing and submitting their feedback. Additional documents may also be provided, as appropriate, to support each stage of consultation.
- 6.2. If requested a translated version of the Summary Consultation Document can be provided for any minority languages used locally or alternative formats for accessibility reasons. Details of who to contact to request an alternative format will be included in the consultation material.

### Consultation activities

- 6.3. The Stage One Consultation will last twelve weeks. The Stage Two Consultation will be at least twelve weeks and the duration discussed with MDC and ECC in advance. The duration of any further focussed stages of consultation will be agreed with MDC and ECC in advance, but will be at least the statutory minimum period which is 28 days. The length of future consultation will also be discussed with CCC as appropriate depending on the extent of development proposed within their administrative area.
- 6.4. The consultation stages will be structured around a series of exhibition events and drop-in sessions<sup>1</sup> that will allow people to meet the Bradwell B team and ask questions. These events will be spread across the Inner and Outer Consultation Areas but weighted towards areas anticipated to be most directly affected by the Bradwell B Project. The timing of these events will vary from for example, include evening and weekends. Those interested in the Bradwell B Project will also be able to access information at local libraries and other civic buildings, although these locations will be unstaffed unless otherwise stated. In addition, all consultation documents will be available via the website ([www.bradwellb.co.uk](http://www.bradwellb.co.uk)), where consultees will have the option to register and submit their feedback.
- 6.5. We have sought to identify venues that are accessible to all. However, if the only possible venue in a particular location is not fully accessible, we will work with anyone who cannot achieve access to ensure that the consultation material is available in another way.

<sup>1</sup> Unless it is necessary to cancel or rearrange these events for any reason outside of Bradwell B's control

## How will the consultation be advertised?

- 6.6. A number of ways will be used to advertise the consultations, these include:
- **Newsletters:** these will publicise the consultation dates and include information on how people can respond and report on key Project milestones. The newsletter will be published on the Project website and delivered to all those in the Inner Consultation Area.
  - **Press adverts:** the consultation events and associated activities will be publicised in the local media (e.g. newspaper adverts).
  - **Posters:** posters will be placed in civic buildings (e.g. libraries, town/village halls and local authorities' offices) and issued to community groups and organisations for display. The posters will include details of the consultation events and explain how consultees can find out more about the consultations.
  - **Stakeholders, groups and organisations:** Bradwell B will engage with a range of stakeholders, bodies and organisations to make them aware of the consultation events and, where appropriate, provide details of how their members can get involved.
  - **Presentations:** Towns and Parish Councils will be able to request meetings and presentations during the consultation stages.
  - **Workshops and Focus Groups:** focus groups and/or workshops on relevant and appropriate aspects of the proposed development may be used to engage specific interests or hard-to-reach groups.
  - **Website:** all consultation documents and others relevant information (e.g. event locations and timings) will be available on the Project website ([www.bradwellb.co.uk](http://www.bradwellb.co.uk)).
  - **Social media:** the Project Twitter account ([@CGNBradwellB](https://twitter.com/CGNBradwellB)) will be used to publicise each stage of consultation, with the introduction of other social media channels as appropriate. Social media activity may also be used to identify any key issues that may trend in relation to the Project.

## 7. How you can respond

- 7.1. Those wishing to submit comments during the consultation process will be able to do so in a number of ways, including:
- Completing a questionnaire from one of the exhibition events or information points, returning it either at a public exhibition, to the freepost address (**Freepost Bradwell B Consultation**) or to the Bradwell B Project email address ([info@bradwellb.co.uk](mailto:info@bradwellb.co.uk)).
  - Completing the online feedback form on the Bradwell B Project website ([www.bradwellb.co.uk](http://www.bradwellb.co.uk)).
  - Calling **01621 451 451** during normal office hours.
  - Additionally, for more information on the consultation, anyone will be able to contact the Bradwell B Project Team through the Bradwell B Freephone Hotline (**01621 451 451**).

## 8. How feedback is considered and reported

- 8.1. Feedback will be collated and analysed from all stages of consultation, which will feed into the development of the Bradwell B Project and the application for development consent prepared. Common themes arising out of the feedback based on common key words, phrases or topics will be identified.
- 8.2. Whilst the views of communities expressed through the consultation will be influential in developing the Bradwell B Project proposals, Bradwell B must also take into account the views of local authorities and other statutory consultees, and consider what is technically and practically achievable in terms of delivering a new nuclear power station.
- 8.3. Feedback and analysis from each stage of consultation will be detailed in a Consultation Report. This will be a key document submitted in support of the application for development consent, and will summarise all feedback received during consultation and how this has informed our preferred proposals. We would, however, also continue to engage with stakeholders and consultees in the meantime prior to submission of the DCO application.
- 8.4. The collection of personal data will be undertaken in accordance with the terms of our Privacy Notice which can be downloaded at [www.bradwellb.co.uk/privacy-policy](http://www.bradwellb.co.uk/privacy-policy). By completing a questionnaire, personal data will be collected by Bradwell B and its consultants for use in connection with the consultation process and subsequent planning applications related to the development of the Bradwell B power station. Responses may be published (in whole or in part) as part of our consultation programme (including any personal details if included in the response). We will not otherwise publish personal details or publicly attribute a response to an identified individual. Responses could be made available

(with personal details) in due course to the relevant planning or local authority or government body so they take it into account. Although not directly within our control, we will request that personal details are not made publicly available by them and in any event they will be required to comply with their legal obligations under applicable privacy laws including the European Union's General Data Protection Regulations 2016/679 ("GDPR"), and local laws which implement it in the United Kingdom.

### Contact information

For further information, please contact the Bradwell B Project Team in one of the following ways:

 Call Freephone **01621 451 451**

 Email **info@bradwellb.co.uk**

 Write **Freepost - Bradwell B Consultation**

 Follow us on Twitter  
**@CGNBradwellB**

© Bradwell Power Generation Company Limited 2020

All material in this document is, unless specified otherwise, copyright of Bradwell Power Generation Company Limited and may not be reproduced without prior written permission. Any unauthorised use or copying of the material may violate trade mark, copyright and other proprietary rights and civil and criminal statutes and may result in civil or criminal action. The material shall not be used in any manner that infringes any trade mark, copyright or other proprietary rights and Bradwell Power Generation Company Limited reserves all rights with respect to such unauthorised use.